

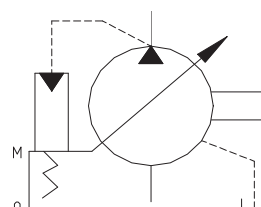
B

□ VARIABLE DISPLACEMENT VANE PUMP

The “SVPF” series variable displacement single stage vane pump is widely used in machine tools for clamping, slide movement etc.



Graphic Symbol



□ Ratings:

Sl.No.	Model Number	Max. Operating Pressure Kgf/cm ²	Delivery at unloading cm ³ /rev.	Flow (lpm)		Pr. Adj. Range Kgf/cm ²	Shaft speed range rpm	
				1800 rpm	1500 rpm		Max.	Min.
1	SVPF-12-20-20	20	6.7	12	10	10 ~ 20	1800	800
2	SVPF-12-35-20	35				10 ~ 35		
3	SVPF-12-55-20	55				10 ~ 55		
4	SVPF-12-70-20	70				10 ~ 70		
5	SVPF-20-20-20	20	11.1	20	16.7	10 ~ 20		
6	SVPF-20-35-20	35				10 ~ 35		
7	SVPF-20-55-20	55				10 ~ 55		
8	SVPF-20-70-20	70				10 ~ 70		
9	SVPF-30-20-20	20	16.7	30	25	10 ~ 20		
10	SVPF-30-35-20	35				10 ~ 35		
11	SVPF-30-55-20	55				10 ~ 55		
12	SVPF-30-70-20	70				10 ~ 70		
13	SVPF-40-20-20	20	22.2	40	35	10 ~ 20		
14	SVPF-40-35-20	35				10 ~ 35		
15	SVPF-40-55-20	55				10 ~ 55		
16	SVPF-40-70-20	70				10 ~ 70		



B

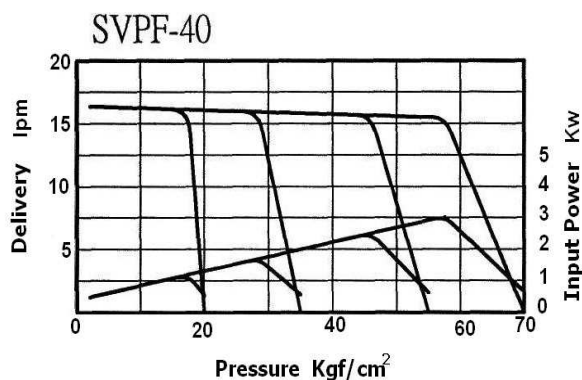
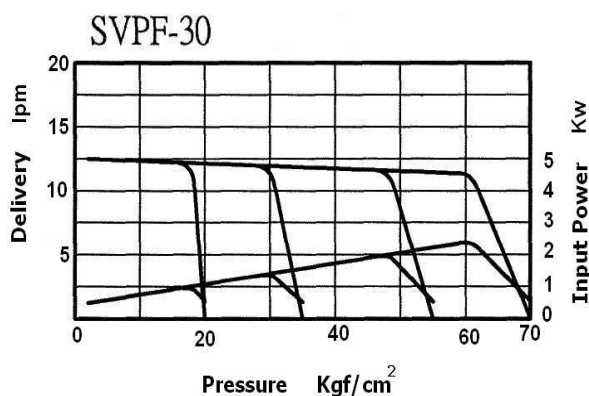
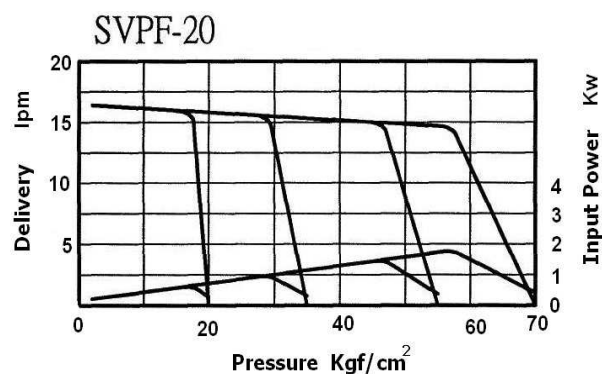
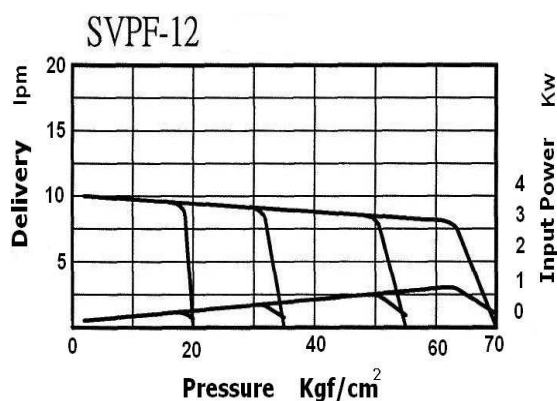
□ Model Number Designation

SVPF	-30	-70	-20
Series Number	Delivery at unloading l/min. 1800 rpm	Max. Operating Pressure	Design Number
SVPF	12	20: 20 Kgf / cm ²	20
	20	35: 35 Kgf / cm ²	
	30	55: 55 Kgf / cm ²	
	40	70: 70 Kgf / cm ²	

□ Mounting Bolts

Model	Soc. Hd. Cap Screw	Qty.
SVPF-12 / 20	M10 x 20L	2
SVPF-30 / 40	M10 x 30L	4

□ Performance Characteristics at an Input speed of 1500 rpm.

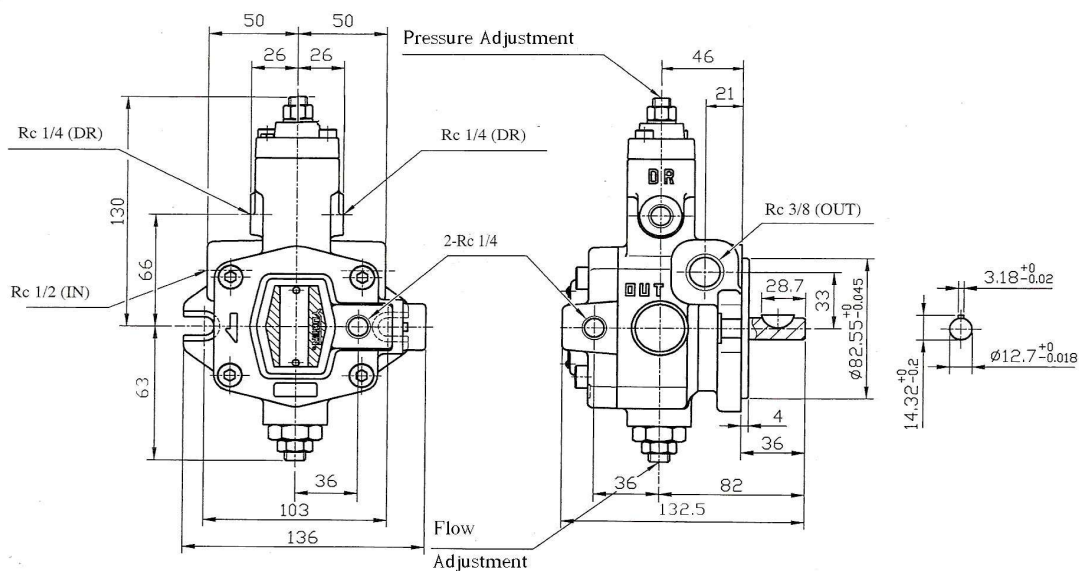




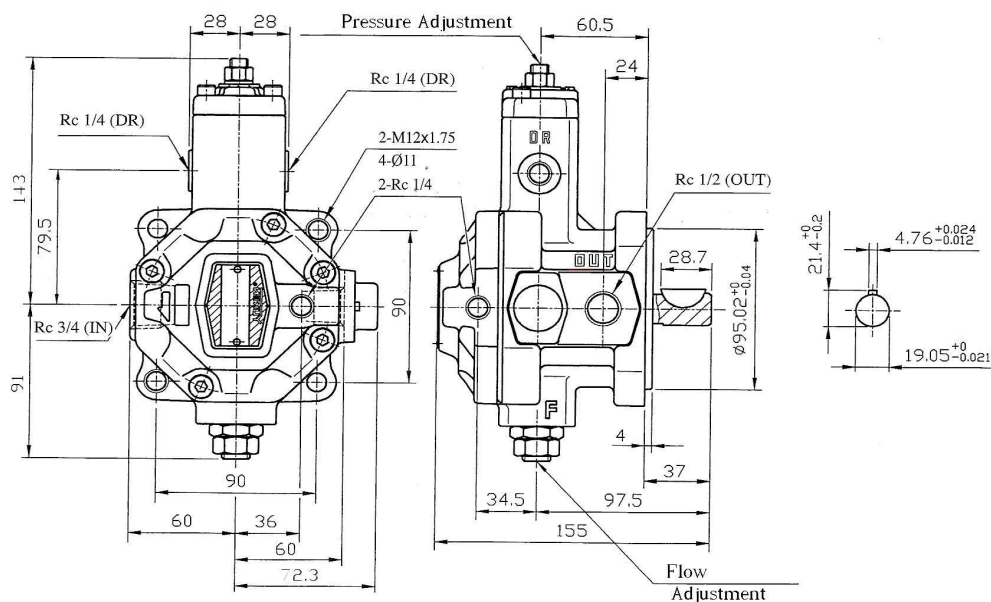
VANE PUMP

B

■ SVPF-12/20



■ SVPF-30/40



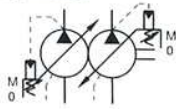
SVP Series Single Pump

SVPDF Series Double Variable Vane Pump

Max. Pressure 70kgf/cm²



Graphic Symbol



This pump is quiet, small, high efficiency, longevity, and quick response. The double variable vane pump can save the installing space, the suction port and discharge port is separate.

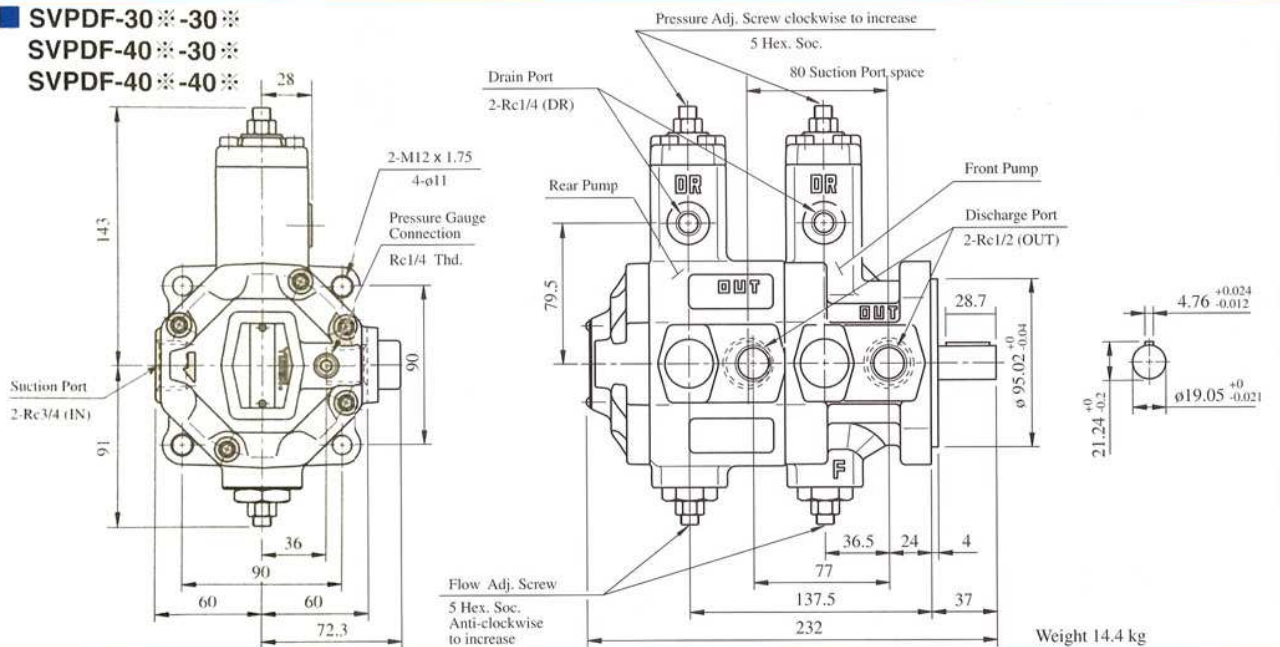
Model Number Designation

SVPDF	-30	70	-30	70	-20
Series Number	Front Pump Geometric Displace L/min (1800 rpm)	Front Pump Max. Operating Pressure kgf/cm ² (MPa)	Rear Pump Geometric Displace L/min (1800 rpm)	Rear Pump Max. Operating Pressure kgf/cm ² (MPa)	Design Number
	30	20 : 20 kgf/cm ² (2.0 MPa) 35 : 35 kgf/cm ² (3.5 MPa)	30	20 : 20 kgf/cm ² (2.0 MPa) 35 : 35 kgf/cm ² (3.5 MPa)	20
SVPDF	40	55 : 55 kgf/cm ² (5.5 MPa) 70 : 70 kgf/cm ² (7.0 MPa)	30	55 : 55 kgf/cm ² (5.5 MPa) 70 : 70 kgf/cm ² (7.0 MPa)	

★ When the displacement of the front and rear pump is different, the large displacement pump should be installed in the front part. For example: SVPDF-4070-3070-20.

■ Please refer to P.37 for the piping of the drain port, the setting of the pressure and displacement

- SVPDF-30 ※-30※
- SVPDF-40 ※-30※
- SVPDF-40 ※-40※



■ Characteristics : The following characteristics are based on fluid viscosity 46 mm²/s (ISO VG-46 40°C), N = 1500 rpm.

■ 1800 rpm, Please refer to P38

