

HIGH TORQUE VANE MOTOR

SERIES MH25-MH35-MH45



- Totally interchangeable to Vickers vane motors series M.
- Three basic frame sizes are available.
- Pressures up to 155 bar.
- All the spare parts such as cartridges, shafts and seal kits are 100% interchangeable to Vickers.
- Warranty: 2 years.

HIGH TORQUE VANE MOTOR

SERIES 25MH-35MH-45MH

FEATURES AND HANDLING

High speed and high-pressure motors ranging from 43.9 to 193.2 cm³ / r with 172 bar of maximum pressure and 9 torques rating choices. The internal inlet chambers are equally and diametrically opposed resulting in balanced in radial loads.

Thus, the motors are hydraulically balanced which reduced wear and heat from friction.

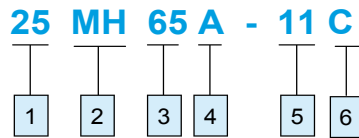
These motors provide 90% efficiency due to dual pressure plates, which produced low internal leakage. Motors are bi-rotational, simply reversed by reversing in flow direction.



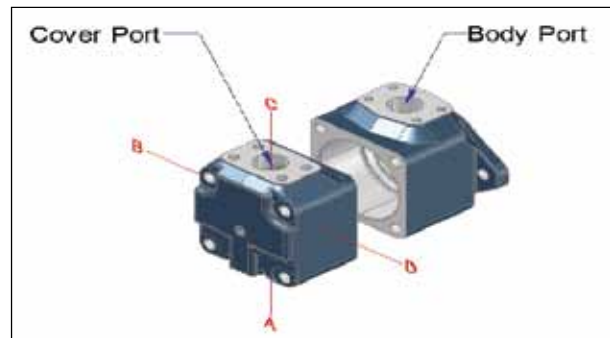
HIGH TORQUE VANE MOTOR

SERIES 25MH-35MH-45MH

ORDERING CODE AND SPECIFICATIONS



- 1** Series
25MH, 35MH, 45MH
- 2** Vane Type Motor (Externally drained)
- 3** Ring size-Nominal torque Rating
(lb.in./100psi)
25MH - 30, 42, 55, 65
35MH - 80, 95, 115
45MH - 130, 155, 185
- 4** Mounting Flange and Port Connections
A - SAE type 2 - bolt mounting Flange and
SAE 4- bolt flange connections
- 5** Shaft
1 - Straight keyed
11 - Splined
- 6** Cover positions
(Viewed from cover end)
A - Opposite body port
B - 90° CCW body port
C - Inline with body port
D - 90° CW from body port

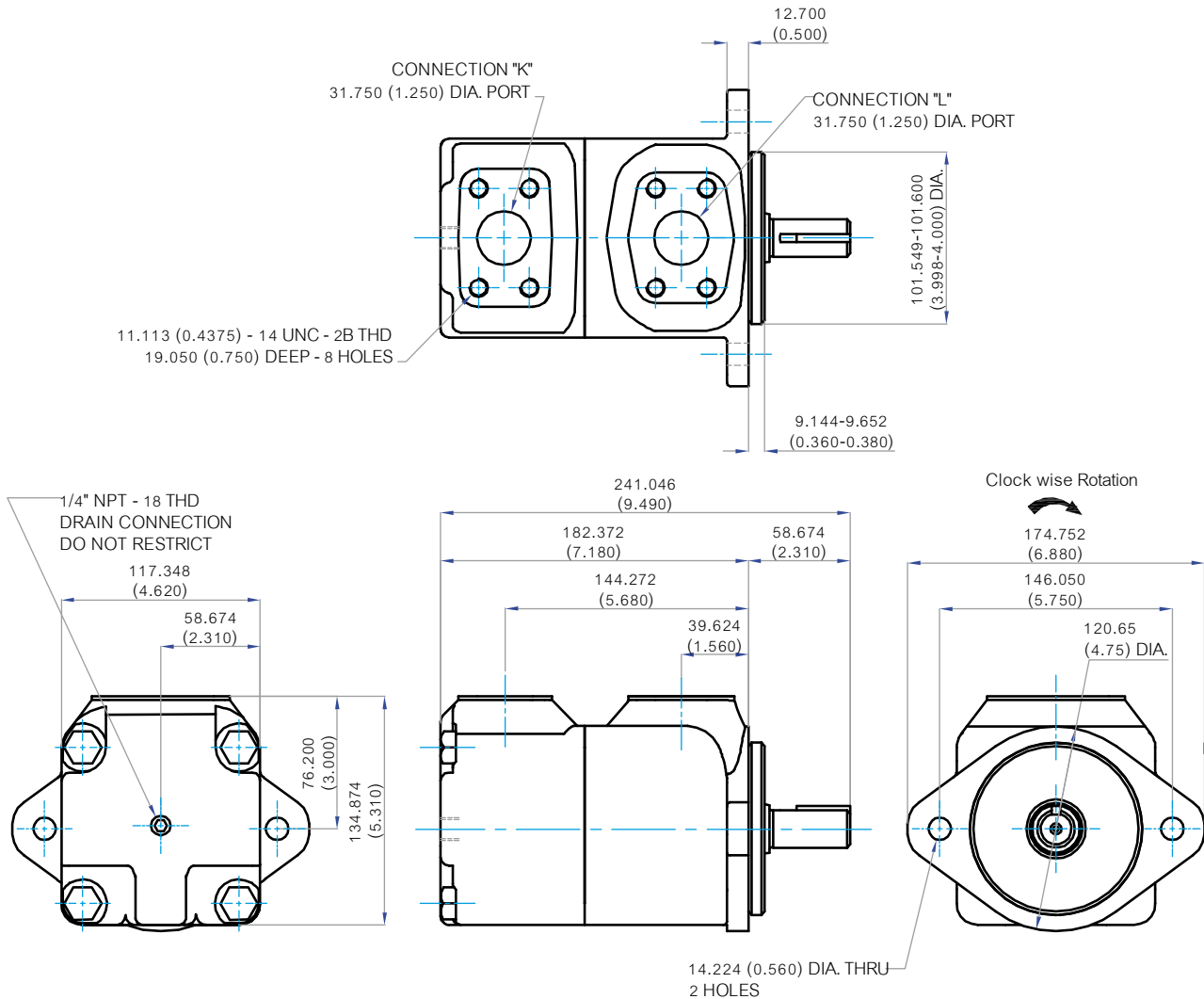


Specifications				Vane Motor MH Series	
Model Series	Torque Nm/6, 9bar (lb in/100 psi)	Displacement cm ³ /r (in ³ /r)	Flow input/ required @ 1200 r/min L/min (USgpm)	Maximum speeds & pressures	Approx Weight kg (lb)
25MH	3.3 (30)	29.0 (1.77)	34.8 (9.19)	3600 r/min @ 34 bar (500 psi) 4000 r/min @ 34 bar (500 psi)	18 (40)
	4.7 (42)	43.9 (2.68)	52.6 (13.9)		
	6.2 (55)	57.7 (3.52)	69.3 (18.3)		
	7.3 (65)	68.7 (4.19)	82.5 (21.8)		
35MH	9.0 (80)	83.6 (5.10)	100.3 (26.5)		29 (64)
	10.7 (95)	100.3 (6.12)	120.4 (31.8)		
	13.0 (115)	121.9 (7.44)	146.1 (38.6)		
45MH	14.7 (130)	138.0 (8.42)	165.4 (43.7)	2400 r/min @ 155 bar (2250 psi) 3000 r/min @ 172 bar (2500 psi)	39 (85)
	17.5 (155)	163.2 (9.96)	195.7 (51.7)		
	20.9 (185)	193.2 (11.79)	232.0 (61.3)		

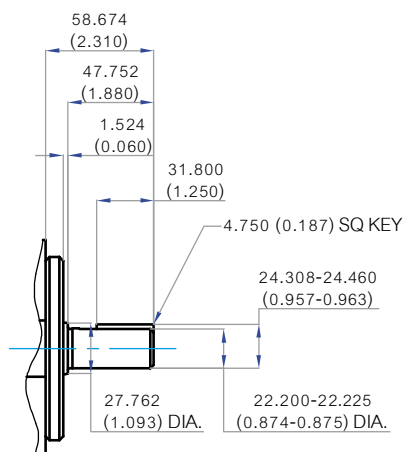
HIGH TORQUE VANE MOTOR

SERIES 25MH

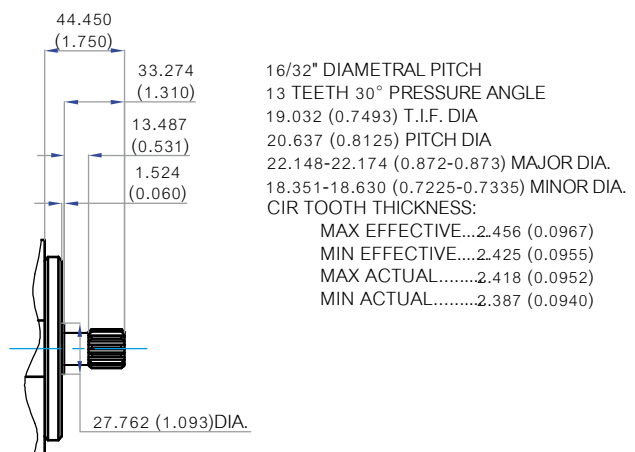
INSTALLATION DIMENSIONS mm (inch)



25M Series
No.1 Straight-keyed Shaft



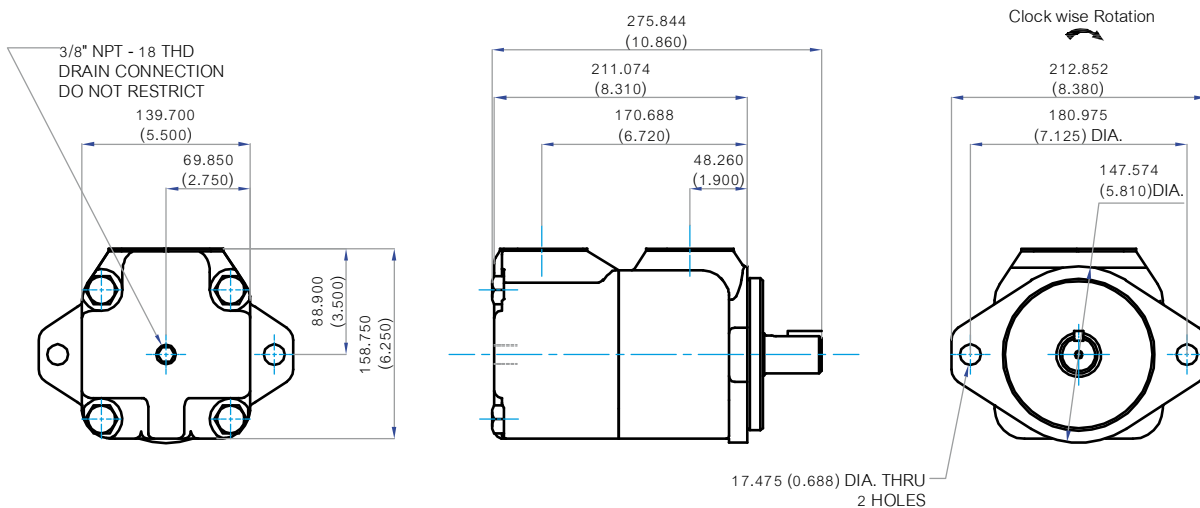
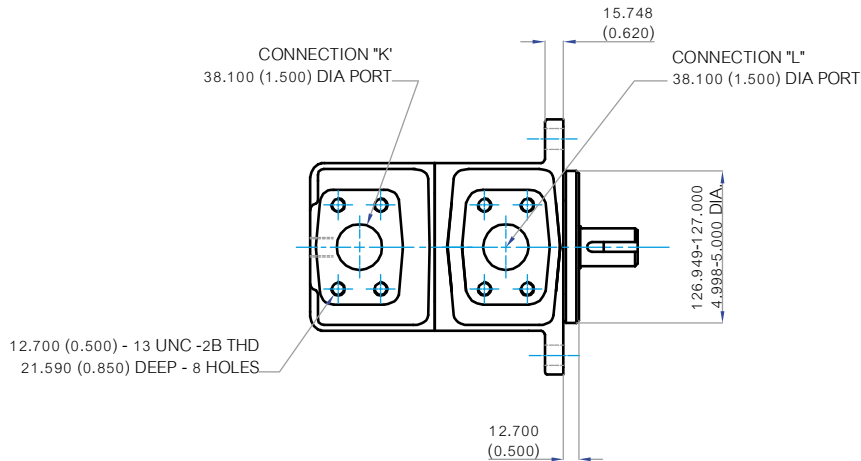
25M Series
No.11 SAE Involute Spline Shaft



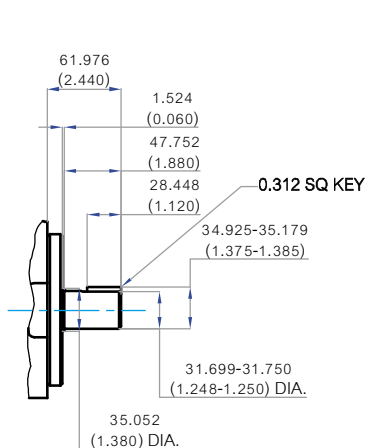
HIGH TORQUE VANE MOTOR

SERIES 35MH

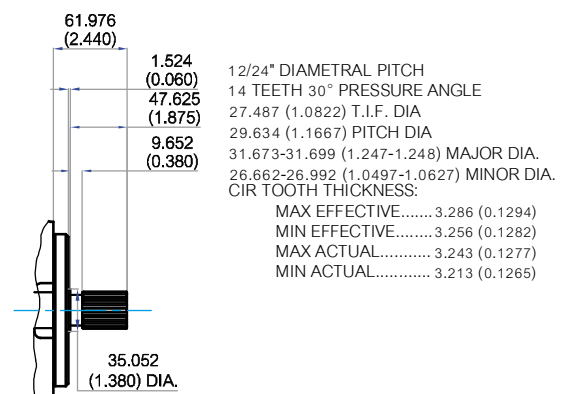
INSTALLATION DIMENSIONS mm (inch)



35M Series
No.1 Straight-keyed Shaft



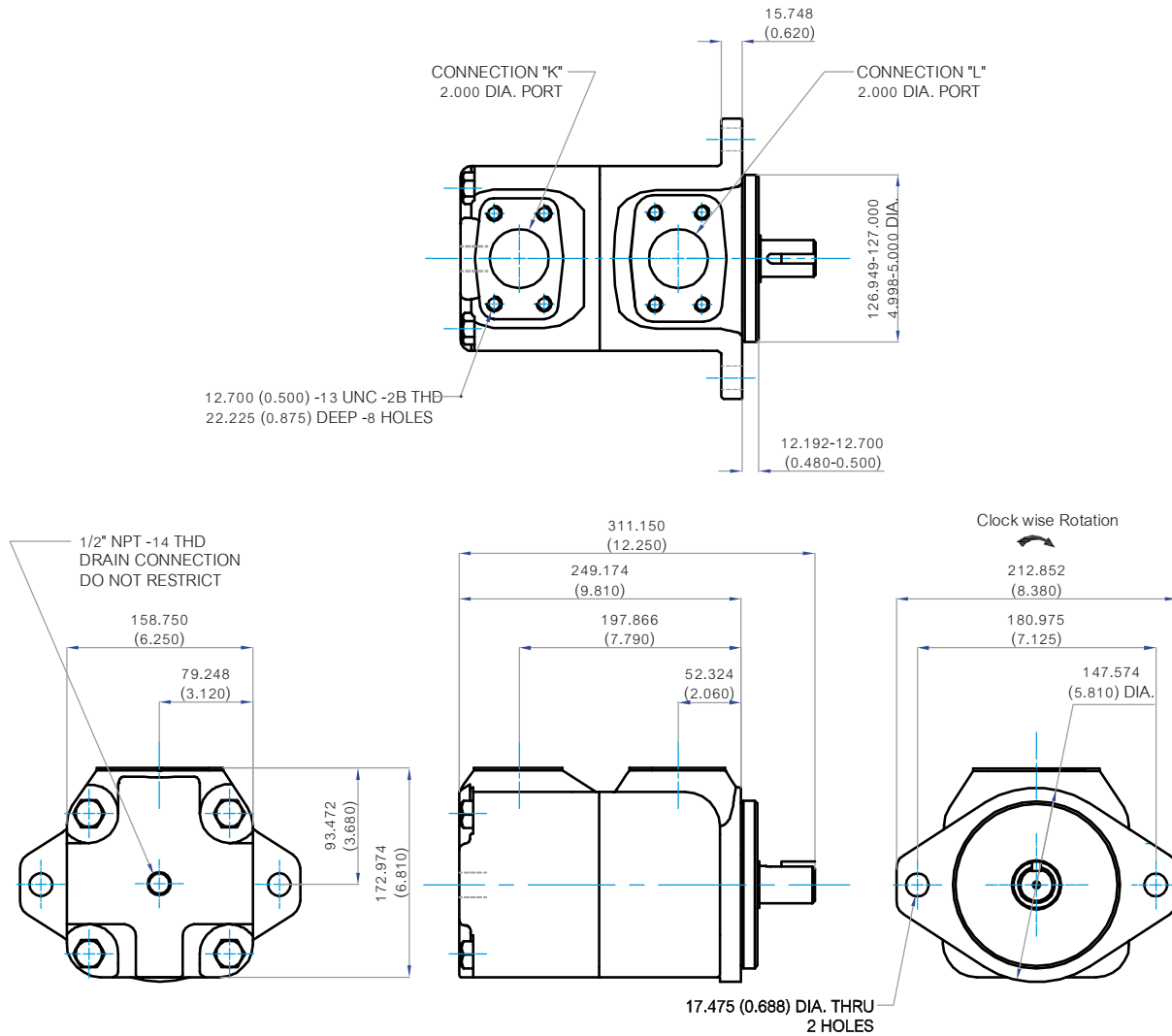
35M Series
No.11 SAE Involute Spline Shaft



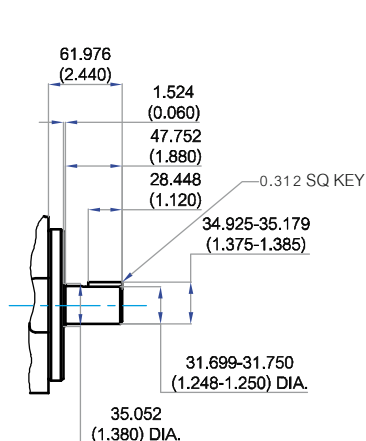
HIGH TORQUE VANE MOTOR

SERIES 45MH

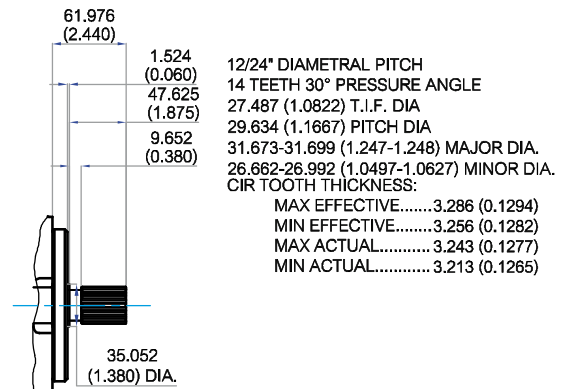
INSTALLATION DIMENSIONS mm (inch)



45M Series
No.1 Straight-keyed Shaft



45M Series
No.11 SAE Involute Spline Shaft



hydraut

hydraut.com