

01 Series Modular Valves

Type of Modular Valve

Class	Name and Model Numbers	Graphic Symbols	Page	Class	Name and Model Numbers	Graphic Symbols	Page
Solenoid Operated Directional Valve (S-) DSG-01-***-70 E-DSG-01-***-D*-70 T-DSG-01-***-D24*-70 G-DSG-01-***-51				<div><div>P</div><div>T</div><div>B</div><div>A</div></div>			
Pressure Control Valves	Relief Valves (for "P-Line") MBP-01-***-70		F-12	Flow Control Valves	Throttle Valves (for "P-Line") MSP-01-50		F-29
	Relief Valves (for "A-Line") MBA-01-***-70		F-12		Throttle Valves (for "T-Line") MST-01-50		F-29
	Relief Valves (for "B-Line") MBB-01-***-70		F-12		Check and Throttle Valves (for "P-Line") MSCP-01-30		F-30
	Reducing Valves (for "P-Line") MRP-01-***-70		F-14		Throttle and Check Valves (for "A-Line", Meter-out) MSA-01-X-70		F-31
	Reducing Valves (for "A-Line") MRA-01-***-70		F-14		Throttle and Check Valves (for "A-Line", Meter-in) MSA-01-Y-70		F-31
	Reducing Valves (for "B-Line") MRB-01-***-70		F-14		Throttle and Check Valves (for "B-Line", Meter-out) MSB-01-X-70		F-31
	Two Pressure Reducing Valves (for "P-Line") MRDP-01-***-10		F-16		Throttle and Check Valves (for "B-Line", Meter-in) MSB-01-Y-70		F-31
	Brake Valves MBR-01-***-30		F-18		Throttle and Check Valves (for "A&B-Lines", Meter-out) MSW-01-X-70		F-31
	Sequence Valves (for "P-Line") MHP-01-***-70		F-19		Throttle and Check Valves (for "A&B-Lines", Meter-in) MSW-01-Y-70		F-31
	Counterbalance Valves (for "A-Line") MHA-01-***-70		F-19		Throttle and Check Valves (for "A&B-Lines", Meter-out, Meter-in) MSW-01-XY-70		F-31
Counterbalance Valves (for "B-Line") MHB-01-***-70		F-19	Directional Control Valves	Check Valves (for "P-Line") MCP-01-***-70		F-33	
Pressure Switch Valves (for "P-Line") MJP-01-***-10		F-22		Check Valves (for "A-Line") MCA-01-***-70		F-33	
Pressure Switch Valves (for "A-Line") MJA-01-***-10		F-22		Check Valves (for "B-Line") MCB-01-***-70		F-33	
Pressure Switch Valves (for "B-Line") MJB-01-***-10		F-22		Check Valves (for "T-Line") MCT-01-***-70		F-33	
Pressure Switch Valves (for "A&B-Line") MJW-01-J-***-10		F-22		Check Valves (for "A&B-Line") MCW-01-***-70		F-33	
Flow Control Valves	Flow Control Valves (for "P-Line") MFP-01-10			F-25	Anti-Cavitation Valves MAC-01-30		F-35
	Flow Control and Check Valves (for "A-Line", Meter-out) MFA-01-X-10			F-25	Pilot Operated Check Valves (for "A-Line") MPA-01-***-70		F-36
	Flow Control and Check Valves (for "A-Line", Meter-in) MFA-01-Y-10			F-25	Pilot Operated Check Valves (for "B-Line") MPB-01-***-70		F-36
	Flow Control and Check Valves (for "B-Line", Meter-out) MFB-01-X-10			F-25	Pilot Operated Check Valves (for "A&B-Lines") MPW-01-***-70		F-36
	Flow Control and Check Valves (for "B-Line", Meter-in) MFB-01-Y-10			F-25	Modular Plates and Mounting Bolts	End Plates (Blocking Plates)) MDC-01-A-30	
	Flow Control and Check Valves (for "A&B-Lines", Meter-out) MFW-01-X-10		F-25	End Plates (Bypass plates) MDC-01-B-30			F-38
	Flow Control and Check Valves (for "A&B-Lines", Meter-in) MFW-01-Y-10		F-25	Connecting Plates (for "P&A-Lines") MDS-01-PA-30			F-38
	Temperature Compensated Throttle and Check Valves (for "A-Line", Meter-out) MSTA-01-X-10		F-27	Connecting Plates (for "P&B-Lines") MDS-01-PB-30			F-38
	Temperature Compensated Throttle and Check Valves (for "B-Line", Meter-out) MSTB-01-X-10		F-27	Connecting Plates (for "A&T-Lines") MDS-01-AT-30			F-38
	Temperature Compensated Throttle and Check Valves (for "A&B-Lines", Meter-out) MSTW-01-X-10		F-27	Base Plates MMC-01-***-40			F-39
			Bolt Kits MBK-01-***-70			F-41	

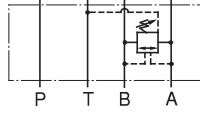
★ Please refer to the catalog page of "E: Directional Control Valves"

Brake Modular Valves

Specifications

Model Numbers	Max. Operating Pressure MPa	Max. Flow L/min
MBR-01-* -30	25	35

Graphic Symbol



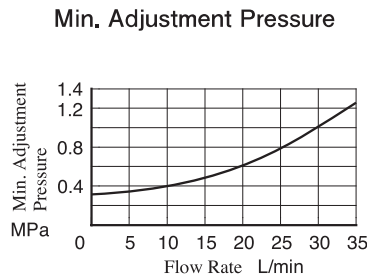
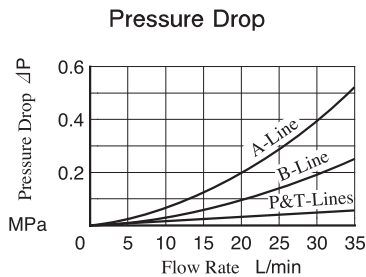
Model Number Designation

MBR	-01	-C	-30
Series Number	Valve Size	Pres. Adj. Range MPa	Design Number
MBR: Brake Valve	01	C: ★-14 H: 7-21	30

★ See the "Min. Adjustment Pressure" of this page.

Typical Performance Characteristics

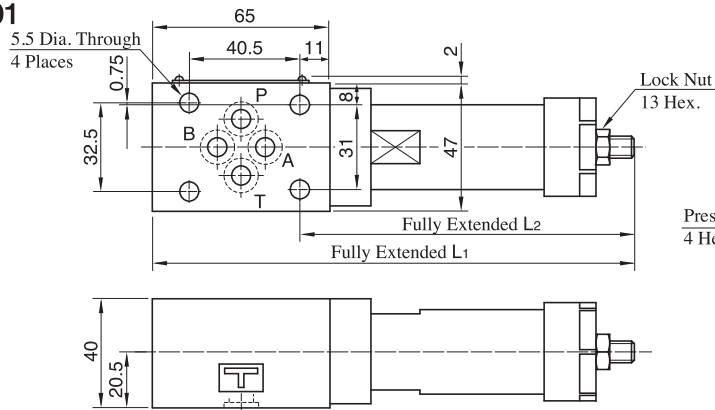
Hydraulic Fluid: Viscosity 35 mm²/s, Specific Gravity 0.850



Instructions

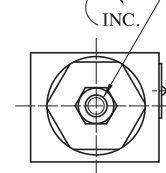
- The minimum adjustment pressure equals the value obtained from the minimum adjustment pressure characteristics plus the tank line back pressure of the left. This back pressure should include the value of the T-line pressure drop characteristics of the valves stacked to the base plate side of the modular valve.
- To make pressure adjustment, loosen the lock nut and turn the pressure adjustment screw clockwise or anti-clockwise. For an increase of pressure, turn the screw clockwise. Be sure to re-tighten the lock nut firmly after making adjustment to the pressure.

MBR-01



Model Numbers	L1	L2
MBR-01-C	161	107
MBR-01-H	176.5	122.5

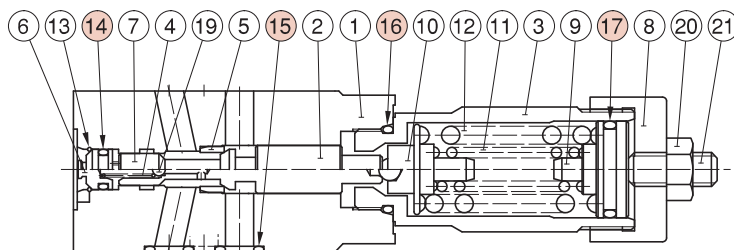
Pressure Adj. Screw
4 Hex. Soc.



Approx. Mass.....1.3 kg

List of Seals

MBR-01



Item	Name of Parts	Part Numbers	Qty.
14	O-Ring	OR NBR-90 P7-N	1
15	O-Ring	OR NBR-90 P9-N	4
16	O-Ring	OR NBR-90 P18-N	1
17	O-Ring	OR NBR-70-1 P20-N	1