

# 01 Series Modular Valves

## Type of Modular Valve

Class	Name and Model Numbers	Graphic Symbols	Page	Class	Name and Model Numbers	Graphic Symbols	Page
Pressure Control Valves	Solenoid Operated Directional Valve (S-) DSG-01-***-70 E-DSG-01-***-D*-70 T-DSG-01-***-D24*-70 G-DSG-01-***-51		★	Flow Control Valves	Throttle Valves (for "P-Line") MSP-01-50		F-29
	Relief Valves (for "P-Line") MBP-01-***-70		F-12		Throttle Valves (for "T-Line") MST-01-50		F-29
	Relief Valves (for "A-Line") MBA-01-***-70		F-12		Check and Throttle Valves (for "P-Line") MSCP-01-30		F-30
	Relief Valves (for "B-Line") MBB-01-***-70		F-12		Throttle and Check Valves (for "A-Line", Meter-out) MSA-01-X-70		F-31
	Reducing Valves (for "P-Line") MRP-01-***-70		F-14		Throttle and Check Valves (for "A-Line", Meter-in) MSA-01-Y-70		F-31
	Reducing Valves (for "A-Line") MRA-01-***-70		F-14		Throttle and Check Valves (for "B-Line", Meter-out) MSB-01-X-70		F-31
	Reducing Valves (for "B-Line") MRB-01-***-70		F-14		Throttle and Check Valves (for "B-Line", Meter-in) MSB-01-Y-70		F-31
	Two Pressure Reducing Valves (for "P-Line") MRDP-01-***-10		F-16		Throttle and Check Valves (for "A&B-Lines", Meter-out) MSW-01-X-70		F-31
	Brake Valves MBR-01-***-30		F-18		Throttle and Check Valves (for "A&B-Lines", Meter-in) MSW-01-Y-70		F-31
	Sequence Valves (for "P-Line") MHP-01-***-70		F-19	Directional Control Valves	Check Valves (for "P-Line") MCP-01-***-70		F-33
Flow Control Valves	Counterbalance Valves (for "A-Line") MHA-01-***-70		F-19		Check Valves (for "A-Line") MCA-01-***-70		F-33
	Counterbalance Valves (for "B-Line") MHB-01-***-70		F-19		Check Valves (for "B-Line") MCB-01-***-70		F-33
	Pressure Switch Valves (for "P-Line") MJP-01-***-10		F-22		Check Valves (for "T-Line") MCT-01-***-70		F-33
	Pressure Switch Valves (for "A-Line") MJA-01-***-10		F-22		Check Valves (for "A&B-Line") MCW-01-***-70		F-33
	Pressure Switch Valves (for "B-Line") MJB-01-***-10		F-22		Anti-Cavitation Valves MAC-01-30		F-35
	Pressure Switch Valves (for "A&B-Line") MJW-01-J*-10		F-22		Pilot Operated Check Valves (for "A-Line") MPA-01-***-70		F-36
	Flow Control Valves (for "P-Line") MFP-01-10		F-25		Pilot Operated Check Valves (for "B-Line") MPB-01-***-70		F-36
	Flow Control and Check Valves (for "A-Line", Meter-out) MFA-01-X-10		F-25		Pilot Operated Check Valves (for "A&B-Lines") MPW-01-***-70		F-36
	Flow Control and Check Valves (for "A-Line", Meter-in) MFA-01-Y-10		F-25	Modular Plates and Mounting Bolts	End Plates (Blocking Plates) MDC-01-A-30		F-38
	Flow Control and Check Valves (for "B-Line", Meter-out) MFB-01-X-10		F-25		End Plates (Bypass plates) MDC-01-B-30		F-38
	Flow Control and Check Valves (for "B-Line", Meter-in) MFB-01-Y-10		F-25		Connecting Plates (for "P&A-Lines") MDS-01-PA-30		F-38
	Flow Control and Check Valves (for "A&B-Lines", Meter-out) MFW-01-X-10		F-25		Connecting Plates (for "P&B-Lines") MDS-01-PB-30		F-38
	Flow Control and Check Valves (for "A&B-Lines", Meter-in) MFW-01-Y-10		F-25		Connecting Plates (for "A&T-Lines") MDS-01-AT-30		F-38
	Temperature Compensated Throttle and Check Valves (for "A-Line", Meter-out) MSTA-01-X-10		F-27		Base Plates MMC-01-***-40		F-39
	Temperature Compensated Throttle and Check Valves (for "B-Line", Meter-out) MSTB-01-X-10		F-27		Bolt Kits MBK-01-***-70		F-41
	Temperature Compensated Throttle and Check Valves (for "A&B-Lines", Meter-out) MSTW-01-X-10		F-27				

★ Please refer to the catalog page of "E: Directional Control Valves"

# Pressure Switch Modular Valves

## Specifications

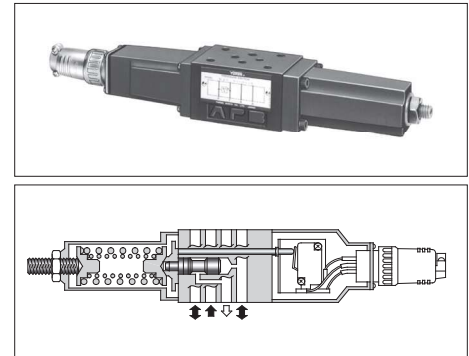
Model Numbers	Max. Operating Pressure MPa	Max. Flow L/min
MJ *-01-M- *- *-10	31.5	35
MJ *-01-J-35-10	10	
MJ *-01-J-100-10	10	
MJ *-01-J-200-10	20	
MJ *-01-J-350-10	35	

## Sensitive Switch Ratings

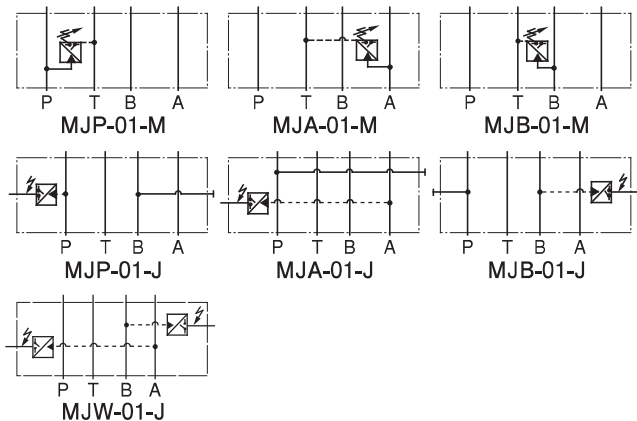
Electric Source	AC	DC	
Voltage (V)	125 · 250	125	250
Current (A)	11A-1/3 HP	0.5	0.25

## Specifications of semiconductor type pressure switch

JT-02 series is installed for semiconductor type pressure switch, refer to "C Pressure Control Valves" catalog page for details.



Graphic Symbols



## Model Number Designation

MJP	-01	-M	-B	-N	-10
Series Number	Valve Size	Type of Switch	Pres. Adj. Range MPa	Type of Electrical Connection	Design Number
<b>MJP:</b> for P-Line <b>MJA:</b> for A-Line <b>MJB:</b> for B-Line	01	<b>M:</b> Sensitive Switch	<b>B:</b> 1-7 <b>C:</b> 3.5-14 <b>H:</b> 7-21	<b>None:</b> Cable Connector Type <b>N:</b> With Plug-in Connector (DIN)	10
<b>MJP:</b> for P-Line <b>MJA:</b> for A-Line <b>MJB:</b> for B-Line <b>MJW:</b> for A&B-Line		<b>J:</b> Semiconductor Type Pressure Switch	<b>35:</b> 0.1-3.5 <b>100:</b> 1-10 <b>200:</b> 2-20 <b>350:</b> 3.5-35	<b>None:</b> Lead Wire Type	

## Instructions

- Wiring of a sensitive switch should be made correctly referring to the table right. Numbers in the switch status column indicate wiring numbers in receptacles or contact numbers of connectors.

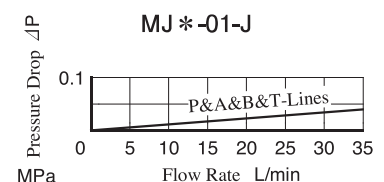
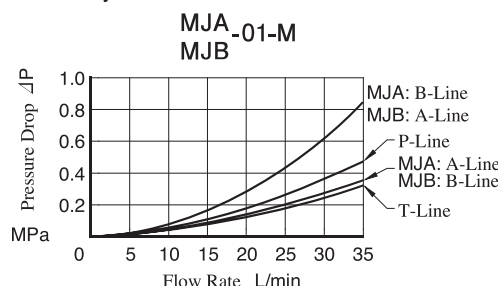
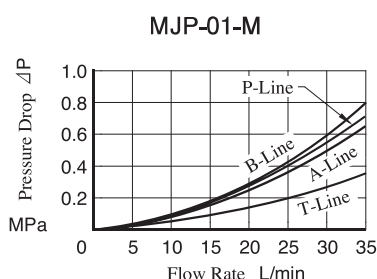
(Pressure with Sensitive Switch and The Switch Status)

Operating Pressure	Switch Status
Less than Pressure setting	1 ○ 2 ○ 3
More than Pressure setting	1 ○ 2 ○ 3

- To make pressure adjustment, loosen the lock nut and turn the pressure adjustment screw clockwise or anti-clockwise. For an increase of pressure, turn the screw clockwise. Be sure to re-tighten the lock nut firmly after making adjustment to the pressure.

## Pressure Drop

Hydraulic Fluid: Viscosity 35 mm<sup>2</sup>/s, Specific Gravity 0.850



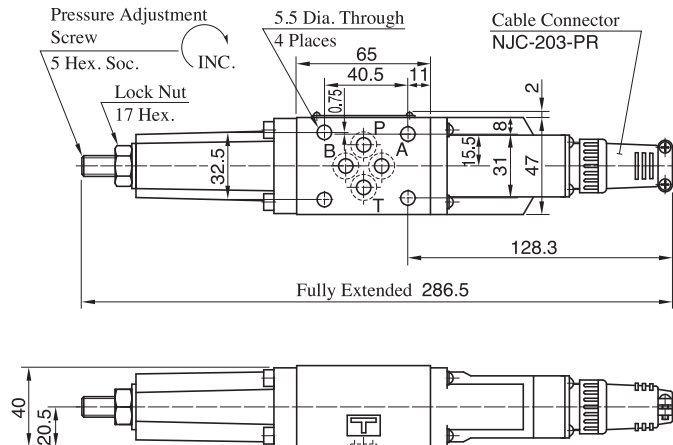
## Accessories

Valve Model Numbers	Accessories
MJ *-01-M- *-10	Cable connector : NJC-203-PR.....1 Pc.
MJ *-01-M- *-N-10	DIN connector : GDM311-B-11.....1 Pc.

### Cable Connector Type

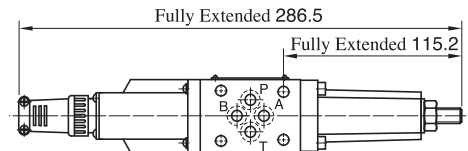
MJP-01-M- \*-10

MJA-01-M- \*-10



Approx. Mass.....1.3 kg

MJB-01-M- \*-10



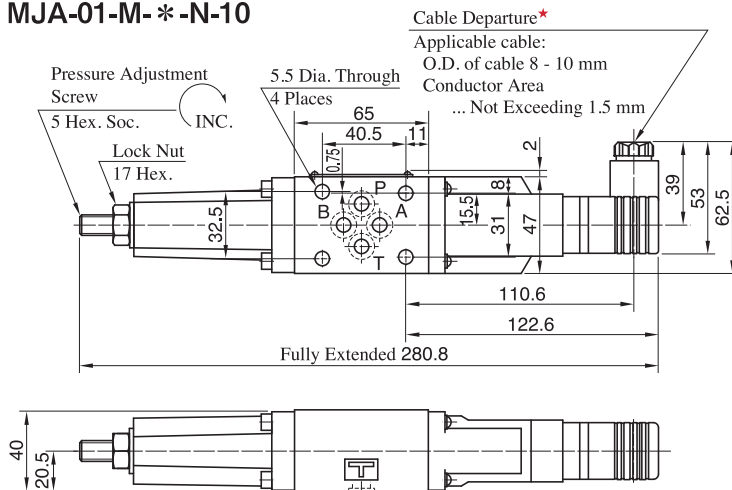
Approx. Mass.....1.3 kg

For other dimensions, refer to "MJP-01" in the drawing left.

### Plug-in Connector Type

MJP-01-M- \*-N-10

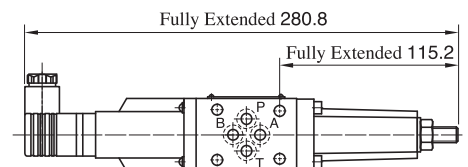
MJA-01-M- \*-N-10



Approx. Mass.....1.3 kg

★As shown by the dot-and-dash line, the cable departure can also be faced opposite.

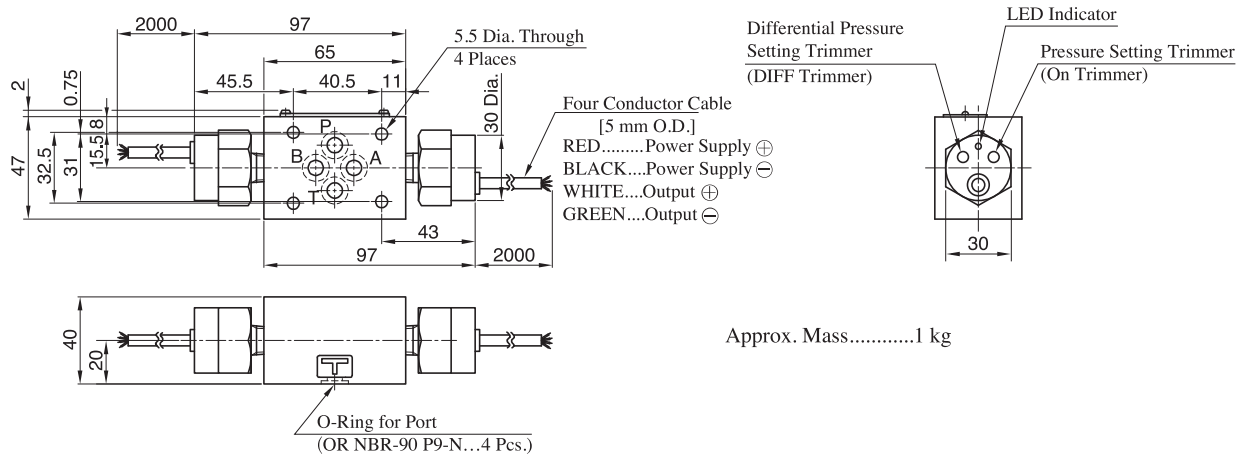
MJB-01-M- \*-N-10



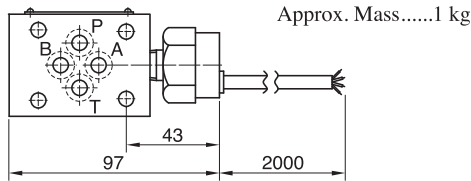
Approx. Mass.....1.3 kg

For other dimensions, refer to "MJP-01" in the drawing left.

● **Semiconductor Type Pressure Switch**  
**MJW-01-J- \*-10**

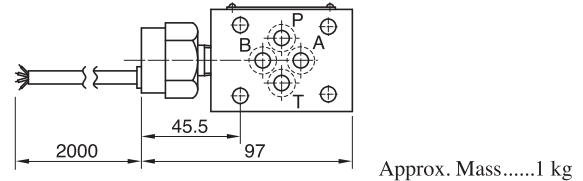


**MJP-01-J- \*-10**  
**MJA-01-J- \*-10**



For other dimensions, refer to "MJW-01" in the drawing above.

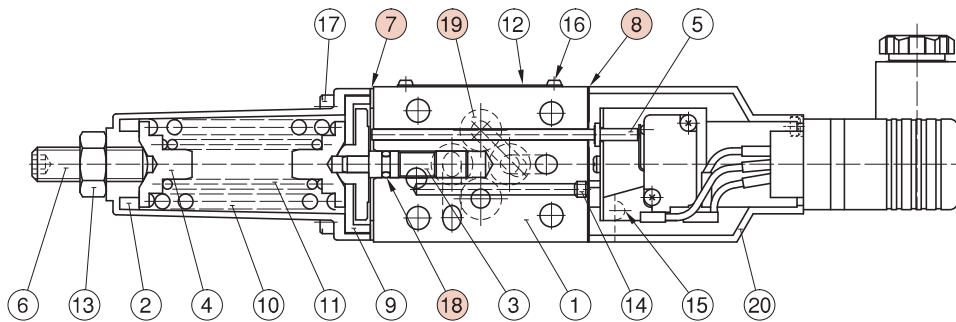
**MJB-01-J- \*-10**



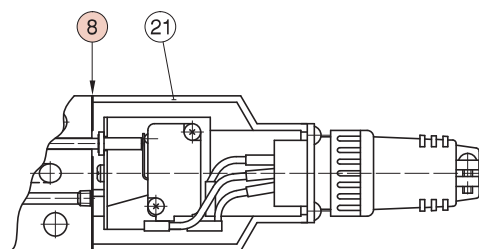
For other dimensions, refer to "MJW-01" in the drawing above.

■ **List of Seals**

**MJP-01-M- \*-N-10**  
**Plug-in Connector Type**



**MJ \*-01-M- \*-10**  
**Cable Connector Type**



Item	Name of Parts	Part Numbers	Qty.
7	Packing	3116-VK414239-4	1
8	Packing	3116-VK414240-2	1
18	O-Ring	OR NBR-70-1 P5-N	1
19	O-Ring	OR NBR-90 P9-N	4

● Since MJ \*-01-J- \*-10 (Semiconductor type pressure switch) does not have any seals inside, only four(4) O-rings for the ports are required. Please refer to the drawing above.